

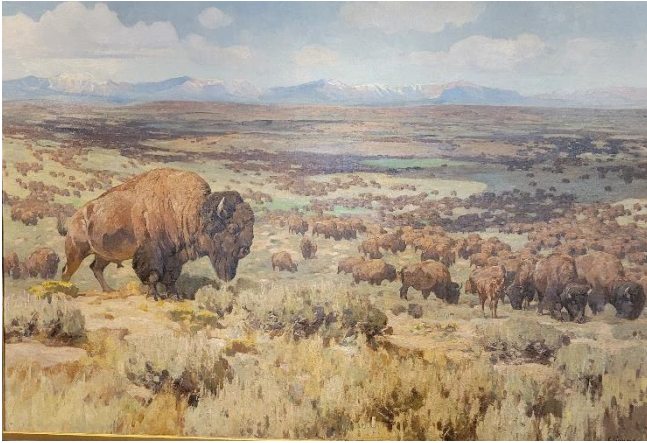
## Alpine, WY

We went to [National Museum of Wildlife Art](#) near Teton, WY. What a great way to spend an afternoon. There is a wildfire about 5 miles from Jackson and with the wind, the area was very smoky. We could barely make out the mountains from the roadways. So, we did not spend time looking at the outside sculptures or in the mountains.





## Alpine, WY





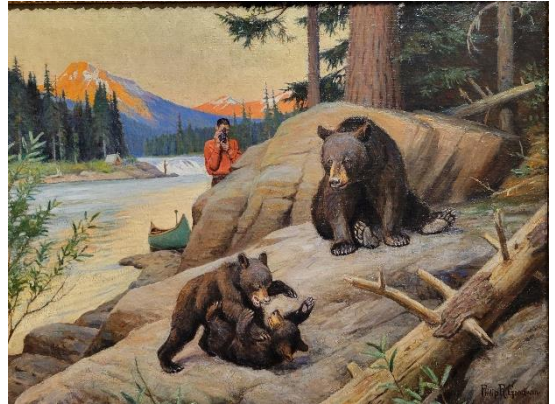
## Alpine, WY





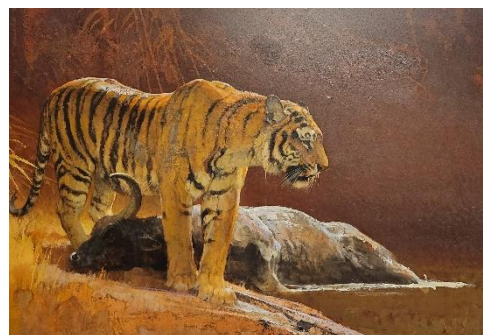
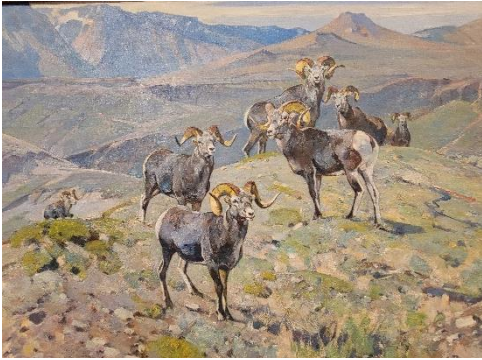
## Alpine, WY

X





## Alpine, WY





## Alpine, WY

